



WHITBY COURT

Residential & Nursing Care

## Welcome to Whitby Court

Whitby Court Care Home opened in February 2014 and is the town's first purpose-built ecological care home. The design of the home has been created from the knowledge of caring for Elderly Ladies and Gentlemen for over 27 years. With great attention to detail in every aspect of the home, we are extremely proud of Whitby Court.



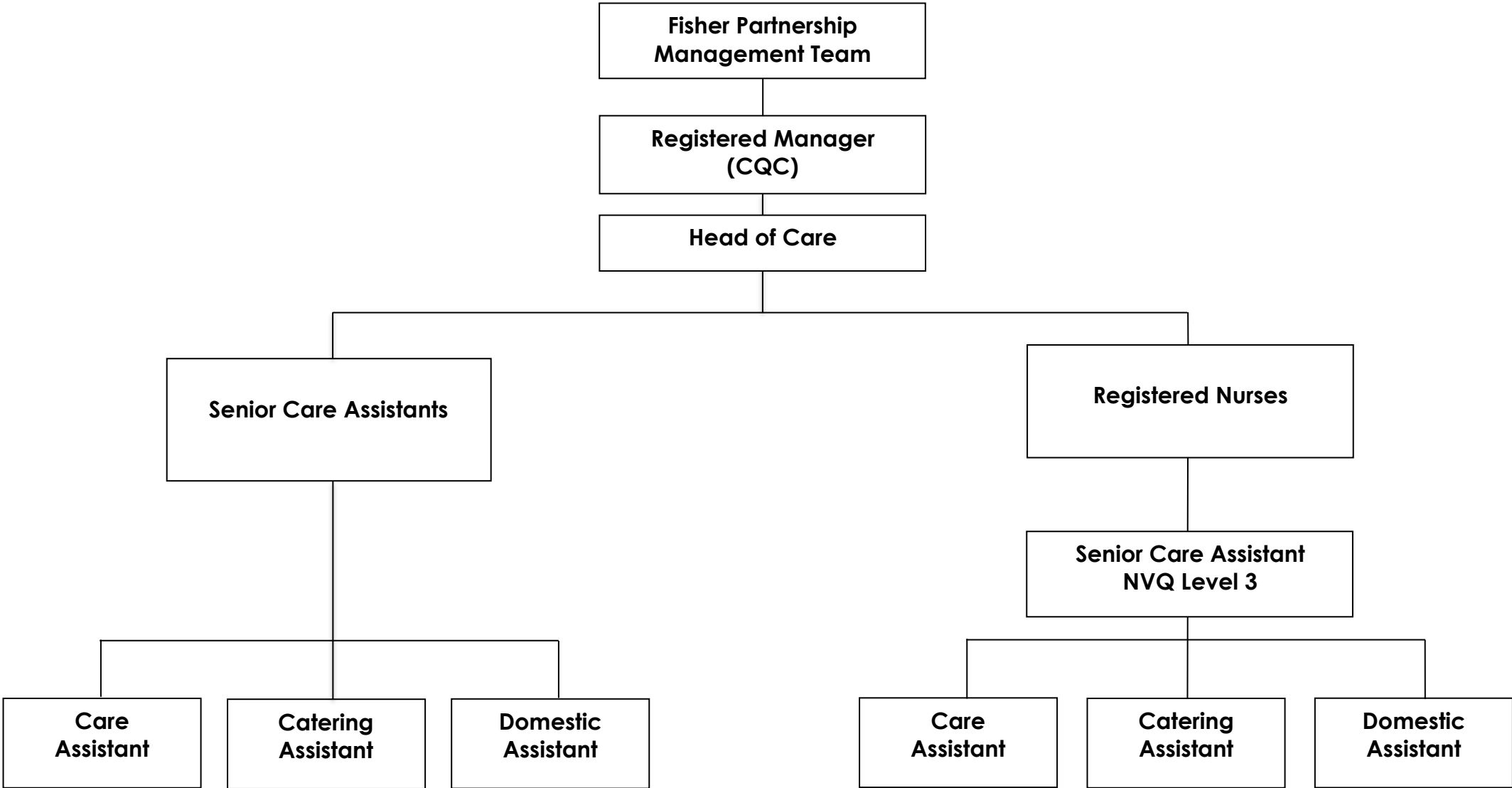
The building comprises of a biomass boiler, solar paneling, LED energy-saving lighting and under floor heating throughout to minimise our carbon footprint. There are forty nine bedrooms each individually designed with a different colour pallet and contrasting furnishings, giving a modern yet restful look, whilst retaining a homely ambience.

There is a double suite for a married couple which is very large and beautifully decorated. All rooms are equipped with en-suite facilities and a wet room shower. Registered for fifty residents, Whitby Court offers residential, dementia and nursing care.

We aim to provide person-centered care in a tranquil, caring environment in which our focused and professionally-trained staff care for the requirements of our residents and their families.



# Whitby Court Staff Organisation





**WHITBY COURT**  
Residential & Nursing Care

## General Details

CARE HOME TYPE	Residential and Nursing Care
NAME OF OWNER / GROUP	Whitby Court Ltd
REGISTERING BODY	Care Quality Commission
PRICE (PER WEEK)	£680.00 to £728.00 - Single Room £926.00 - Suite Plus Care fees as assessed.
MEMBER OF THE INDEPENDENT CARE GROUP	Yes
PRIVATE / VOLUNTARY	Private
SPECIALISED CATEGORY	Residential Care for over 65 year olds
TOTAL NUMBER OF REGISTERED BEDS	51 beds

### Accommodation

- 30 Residential Single Rooms
- 20 Nursing Single Rooms
- 1 Suite

### Care Speciality Provided

- Residential Care
- Nursing Care
- Respite / Holiday



WHITBY COURT

Residential & Nursing Care

## Accommodation and Related Services

- Each bedroom has been individually designed offering en-suite wet-room facilities
- Fully-functioning resident's kitchen
- Wall-mounted televisions
- Internet and Wi-Fi throughout the building
- Two state-of-the-art house bathrooms
- Multi-sensory room and indoor garden
- Café
- Hair salon

The services below are also available, but not included in the weekly fee;

- Hairdressing
- Chiropody
- Aromatherapy
- Personal telephone line
- Newspapers and magazines
- Dry cleaning
- Visitors meals
- Toiletries

The rooms are furnished to a high standard and have been individually designed to offer an extremely comfortable and relaxed atmosphere. However, we are happy for residents to bring their own furniture if they wish.



WHITBY COURT

Residential & Nursing Care

## Service User Guide

### Summary of Purpose of the Home

Whitby Court Care Home is owned by Henson Healthcare (Whitby) Ltd and operated by The Fisher Partnership which has its main office at 10 North Park Road, Harrogate, HG1 5PG. The owners also manage and own other care homes in North Yorkshire.

Whitby Court opened in 2014, to enable our residents to continue living as independently as possible by receiving care and support consistent with their incapacities and disabilities.

We continue to value each and every individual, who comes to live at Whitby Court. We welcome people from all walks of life and with many different needs, who enjoy the opportunity to share and celebrate the richness and diversity of their experience. All residents are assured that they will be treated with respect and dignity according to their individual needs and wishes.

People who enquire about our accommodation and services are provided with our brochure. All inquirers are made aware of our diversity and anti-discriminatory policies and are encouraged to visit the Home before continuing with their application. They may then apply directly for residence at Whitby Court; all applicants are subject to an assessment of their needs and also an assessment of their financial circumstances.

Each request is given careful consideration by the Home's management and, depending on vacancies, a decision to offer residency is made within seven days. Where there is no current vacancy it is possible for an applicant to be placed on a waiting list.

### Number of Places and for Whom

Whitby Court Care Home is a registered care home, and aims to provide high-standard accommodation and care for 50 residents. All accommodation complies with the National Minimum Standards that came into force from 1<sup>st</sup> April 2002, being equipped with en suite facilities, some having bathroom suites and others shower rooms.

Anyone over the age of 65 years, including married couples or partners, who because of physical or mental incapacities require help with daily living, is entitled to apply for residency at Whitby Court.

We operate a strong diversity policy in respect of residents and staff, and are committed to ensuring that no-one is excluded on the grounds of their ethnicity, religion or culture. We therefore discuss with each applicant how their individual and cultural needs can be met.