

# Rivendell View

---

Care Home

Expect *More ...*

ideal carehomes



## Welcome to *Rivendell View*

We are delighted you are considering Rivendell View as we understand what an important decision choosing the right care home is for you and your family.

At Rivendell View, we offer 24 hour residential and dementia care in surroundings which create a great place to live. We pride ourselves in making a real difference to the lives of our residents, going beyond just meeting their expectations through to the aspirational choices we provide in our person-centred care.

By putting an active lifestyle at the heart of the home, our caring and highly trained staff promote independence, ensuring quality care is received by all our residents at all times.

Rivendell View welcomes new residents for both short term and permanent placements and all on an inclusive fee basis to give complete peace of mind. We will work together with you and your family to ensure that the process of moving into Rivendell View is as stress-free as possible.

Our friendly team are here to help and we are always happy to answer any questions you may have. Please give us a call if there is anything else you would like to know:

***0113 385 3575***



“



Everything we do at Rivendell View is focused on creating a great place to live. From the high quality, locally-sourced food we provide at every meal time through to the daily range of activities, we are proud to offer an active lifestyle that meets a range of interests and preferences.

*This is your home and it is our role to help you enjoy it.*

We see each resident as a unique individual which is reflected through our person-centred care. Before you move in, we'll want to know all about your likes and dislikes as well as interests and hobbies, so we have everything in place to create the aspirational lifestyle you want as soon as you move in, whether you are joining us for residential or dementia care. This is your home and it is our role to help you enjoy it.

**Stacey Linn**  
Managing Director

”

## Quality Care

Rivendell View is a purpose-built luxury care home owned and operated by Ideal Carehomes. Ideal Carehomes was established over a decade ago and is a provider of high quality residential and dementia care operating state-of-the-art care homes across Yorkshire, the North and Midlands. Rivendell View benefits from the support of Ideal Carehomes' experienced team who make sure we attract and retain the best staff, offering unrivalled training programmes via the Ideal Academy to ensure our residents receive the highest quality of care.

*A home is more than just bricks and mortar, it is a place you feel safe, well cared for and relaxed. Home is where personal choices make you feel the most comfortable. It is the place you want to live.*



# feel at home ...



Copyright The Francis Frith Collection

*Located in the heart of the community.*

*Our home is called Rivendell View as a nod to Lord of the Rings author, J.R.R. Tolkien who began writing his famous books whilst visiting his aunt in Gedling. Rivendell is the valley in the Lord of the Rings and represents 'a sanctuary and a place that feels like home'.*



*Help plant vegetables or enjoy the morning paper in the sun.*



Rivendell View has all the finishing touches you would expect from a warm, welcoming and luxurious home, with attractive décor and landscaped gardens. All 66 bedrooms are spacious and well-appointed, with en-suite facilities, enabling us to deliver person-centred care in a dignified manner, promoting independence as far as possible.

The inspirational day spaces at Rivendell View are designed with residents in mind and include areas such as a traditional tea room with balcony, beauty parlour, deluxe cinema, relaxing lounge areas, library and lavish Sky Bar which is perfect for celebrations! An airy botanical room leads directly to the landscaped gardens where green-fingered residents can enjoy pottering in during the summer months.







## your *ROOM* ...

The stylish rooms are painted in relaxing tones and come equipped with custom-made fitted furniture (wardrobes, drawers and cupboards for all your clothes and knick-knacks), ample seating, a flat screen Smart TV and mini fridge.

Each room has a bespoke, three-quarter bed specially designed to not only look attractive but to be comfortable and supportive for the best sleep possible. The luxurious beds are fully adjustable via a convenient handset so you are able to sit up, lay down and easily lower and raise the height safely and at the touch of a button.

Ground floor bedrooms have direct access onto the landscaped gardens and bedrooms on higher floors enjoy stunning and far reaching views.

Your en-suite shower room is spacious and airy and there is always the opportunity to use the assisted bathroom whenever you fancy a soak in the bath.

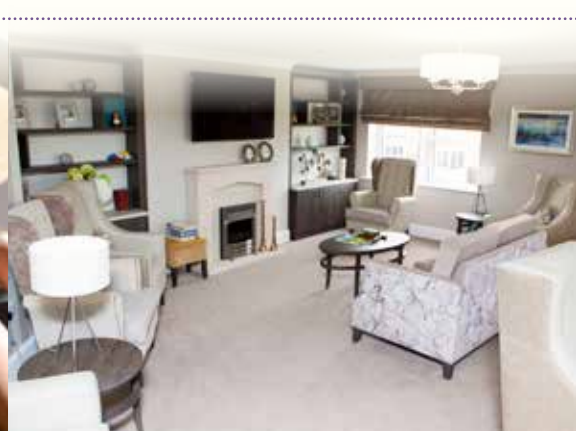
Our state-of-the-art call bell system throughout the home means that whilst you can enjoy your own space, our team are never far away and always ready to help.

Your room comes fitted with everything you need but it is your home so you are very welcome to bring your own furniture as well.



*Feel pampered and looking your best at our hairdressing salon.*

*Rivendell View is more than just a care home – it is the next chapter of your life and the place you want to live.*



## caring *for you* ...

Rivendell View is our residents' home and we are there to facilitate you enjoying it however you wish. Our care team is available 24 hours a day should you require our assistance at any time of day or night. Exceptional standards of personalised care are delivered by Rivendell View's staff who are trained via the Ideal Academy, which is second to none.

The design of our buildings and extensive training incorporate best practice care to make sure our residents feel calm and content. We are like one big family and our residents quickly make lasting friendships with our care team as well as fellow residents.

### Ideal Fresh Living

In addition to our high standards of infection control already in place, Ideal Carehomes has successfully launched an initiative called Ideal Fresh Living bringing a new and continued focus on cleaning and sanitisation. We have extra staff allocated to cleaning and infection control including regular deep cleans and frequent sanitising of all surfaces and this is monitored with routine audits carried out by managers. Our modern, purpose-built building provides a perfect environment to implement natural ventilation into daily life, with lots of large social areas to enjoy as well as spacious bedrooms with en-suite facilities to allow plenty of personal space for each resident.



*Enjoy a relaxing bath in one of our tastefully decorated bathrooms.*

Our care team have access to the latest care plan technology and will take time to get to know you, your family and all your favourite things. This helps us to know your desires as well as your needs to make sure your care package is tailored to respond to all health, care and personal requirements you may have. It will also help inform us of what to include in our menus and activity programmes.

Rivendell View will meet all your day to day needs, including meals and snacks as well as a full laundry and housekeeping service.







*Enjoy a board game with friends.*

Maintaining physical activity has lots of benefits for the well-being and independence of residents and we encourage regular light exercise tailored to suit everyone, as well as more leisurely activities such as arts, model making, flower arranging or gardening - our annual 'Gardens in Bloom' competition is enjoyed by everyone!

Rivendell View's Activity Co-ordinators make sure we have a variety of entertainment and pursuits for you to take part in and no two days are ever the same!

When you move to Rivendell View, you join a vibrant new community of likeminded people where you can socialise with ease and build new, long-lasting friendships. Our safe and welcoming visiting spaces are the perfect place to welcome and spend time with loved ones or guests.

## The Rivendell View *lifestyle* ...

Whether you want to spend the day relaxing, reminiscing or taking part in one of our varied activities, there is plenty to do to ensure you enjoy your day.

Activities encourage fullness of life, day to day enjoyment and fun. Each day, there is a full timetable of activities available in the home as well as many recreational resources you can access yourself at any time. If you want to kick-back and watch TV, that's fine too - this is your home to enjoy as many or few of the activities on offer as you wish.



*Keep active with armchair exercises, show your creative side making bird boxes or have a giggle with friends over afternoon tea, there is lots to do at Rivendell View.*



## tasty *treats* ...

*A variety of tasty, nutritious, menu options at all meal times.*

Rivendell View's varied menus of healthy meals all have a choice of options at breakfast, lunch and dinner. All food in the home is created using the best locally sourced ingredients and is prepared freshly on-site, and can be enjoyed wherever you prefer - perhaps in the well-appointed dining rooms or tea room with your fellow residents or more private dining, in the comfort of your room whilst catching up with the soaps.



*Tuck into a hearty steak pie.*

Our Chef makes sure that all dietary needs are met and our meals are nutritious - not to mention, very tasty! Chef also gains feedback from residents to ensure there are plenty of options which meet the preferences of the people who live with us.



*Look forward to the ambient dining experience at Rivendell View with the food being appealing both on the eye and on the palate.*





The daily menu is made available around the home and residents can choose to eat together in the well-appointed dining areas or request for meals to be served in your room should you prefer. Even if you're not tempted by anything on the menu, Chef will always try to rustle up something that does meet your fancy.

You'll find snacks readily available throughout the home and we are partial to some tea and cakes in the afternoon. You are welcome to help yourself to hot drinks and our staff are always happy to make a brew.



*There is always time for a cuppa and some cake – the only question is what type of cake!*

## moving *in* ...

We understand how difficult the decision to move into residential care can be for both you and your family. Our experienced team will work together with you to ensure the process of moving into our home is as stress-free as possible so you quickly feel settled and at home in your new surroundings.

Pre-admission assessments are used to get to know you before you even move in and we are here to answer all your questions and help you every step of the way.

We can carry out an assessment at your convenience and within 24 hours of your initial enquiry.



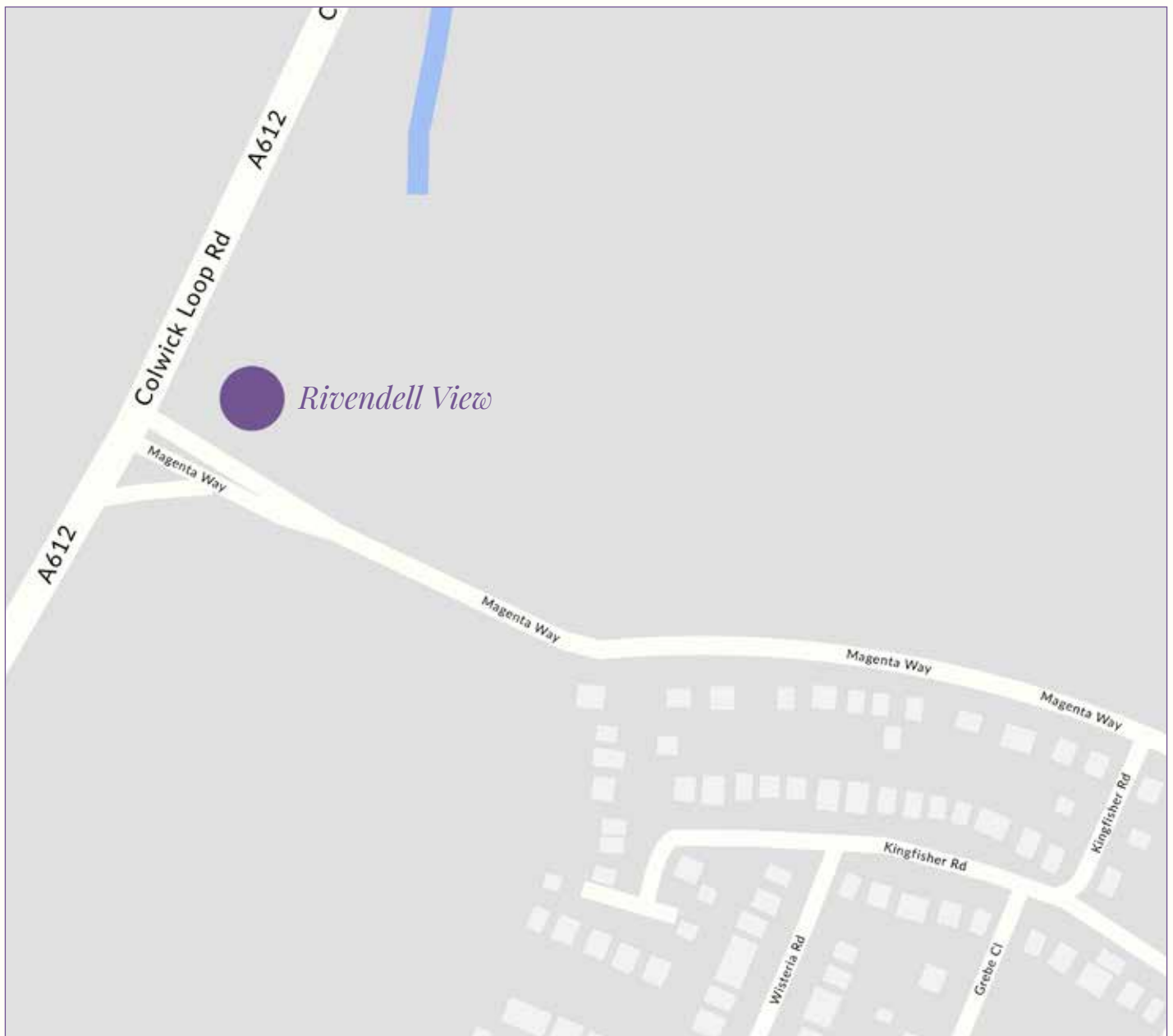
## Rivendell View *at a glance* ...

Our inclusive fees give peace of mind and allow residents to enjoy our facilities and services without having to worry about extra costs. Everything below is included in the Rivendell View package:

- Exceptional standards of residential and dementia care, 24 hours a day, in a luxurious and safe environment
- Highly trained, caring and compassionate Home Manager and care team
- Full electronic care plan tailored to your health, personal and care needs
- Spacious bedrooms with en-suite facilities
- Fitted furniture, flat screen Smart TV and mini-fridge in bedrooms
- Garden rooms also available
- Relaxing bathrooms with specialist assisted bath
- Complimentary Wi-Fi throughout the home
- Delightful landscaped gardens
- Choice of tasty, nutritious, meals available to enjoy in the ambient dining areas or in a more private setting with a glass of wine or beer should you wish
- Selection of beverages and snacks throughout the day
- Dedicated Activity Co-ordinators and regular Social Committee Meetings
- Full and varied programme of activities with something for every day of the week
- Clubs, entertainment and talks within the home
- Use of all social spaces including tea room, cinema, lounges, dining areas, botanical room, Sky Bar and library
- Transport and accompaniment to medical appointments where necessary
- Local GP service and medication management
- Annual eye test (treatments would be charged)
- Annual dental check-up (treatments would be charged)
- Monthly appointment at our on-site hairdressing salon
- Regular appointments with a carefully selected chiropodist
- Selection of newspapers and magazines within the home
- Full personal laundry service and daily housekeeping
- Disabled access and lift service
- Car parking for residents and visitors







*Please contact us with any questions or to arrange a viewing,  
we are here to help.*



## Rivendell View Care Home

[idealcarehomes.co.uk](http://idealcarehomes.co.uk)

[rivendell.view@idealcarehomes.co.uk](mailto:rivendell.view@idealcarehomes.co.uk)

Magenta Way, Stoke Bardolph, NG14 5HH

0113 385 3575

**ideal** carehomes