

Inspected and rated

Good



# Chetwynd House Care Home

0115 697 9767



## Family-Run Award Winning Care Homes

a superb place to live or work





Inspected and rated

Good



SCAN THE QR  
CODE WITH  
YOUR PHONE  
FOR THE FULL  
REPORT



Chetwynd House Care Home

Slade Road, Chilwell, Nottinghamshire, NG9 4GS

Tel. 0115 697 9767

Email. [chetwynd@adeptcarehomes.co.uk](mailto:chetwynd@adeptcarehomes.co.uk)



# Welcome To Chetwynd House

Where A Warm Welcome Awaits You

At our care home, we believe that every individual is special and deserves the very best care and support. That's why we go above and beyond to create a warm and welcoming environment where our residents can feel happy, comfortable and safe.

Adept Care Homes is an exceptional care provider in the Midlands, with over 30 years' experience. Come and visit us to witness a unique feeling of calm and warmth, coupled with beautiful design and décor. See our beautiful home for yourself, visit us and talk to our team, our residents and their family members to get a real sense of our communities.

[adeptcarehomes](#)



# Our Home



Chetwynd House Care Home, located in Chilwell, Nottinghamshire offers luxury, high-quality residential, dementia, respite and day care.

There are five separate care suites, each with its own beautifully decorated and furnished lounge, dining facilities and lifestyle kitchen. Residents are encouraged to live life as they choose with an extensive social calendar that is packed with meaningful activities, clubs, and regular entertainment

 [carehome.co.uk](https://carehome.co.uk)

## Overall Experience 5 out of 5

"Our dad became a resident earlier this month. We chose Chetwynd from five homes as the management and her whole team really impressed us with their approach and the professional manner. Dad has settled in really well. He loves the team that looks after him and has already made good friends. He likes the food and the range of activities and has a lovely, warm room with a patio area. We are all very happy and feel very reassured that he is getting the best care and company possible."

Mike B (Son of Residents)





# Our Care

## Our Residential Care

Our Residential Care provides comfort and peace of mind, tailored around each individual and their own unique needs.

Designed for those who simply require support with everyday activities, such as mobility, or help with washing, dressing, or eating in a caring environment. You will always find our well-trained and dedicated team members on hand to assist, providing the highest quality of care.

## Our Respite Care

Our Respite Care is short term care designed to assist with the recovery from an operation or illness with the support of our excellent care team and our facilities.

Respite stays are a minimum of two weeks but you can stay for as long as you like. Individual care plans are tailored to each resident's requirements to help and support their recovery and restore their confidence and independence as soon as possible.

## Our Day Care

Your loved one or family member doesn't need to be a resident to benefit from the dedicated daily support at one of our friendly, welcoming care homes.

We provide a comfortable, safe place to enjoy a little extra company and stimulating activities in a homely environment. Residents and day visitors are treated in the same caring and supportive manner with many enjoying the opportunity to make new friends.



# Our Dementia Care

Making the decision to move a loved one into a dementia care home is one of the hardest decisions a family can make.

At Adept, our dementia care has a simple, person-first approach. We ensure that our care is centred around each of our resident's specific care needs. Our highly trained and compassionate team are always on hand to provide additional care to make sure that all our residents feel understood, content and safe.

Are you or a loved one living with Dementia?  
Do you have questions you need answering?  
Or maybe you just someone to talk to?

If you have answered yes to any of these questions why not speak to the team today and find out more about our Relatives Support Groups, our Dementia 'Forget Me Not' Cafe' or a one-to-one session with our Dementia Manager, who has over 30 years experience who is here to help.





# Meet Our Dementia Manager

"I have over 34 years of experience working with people living with dementia, from pre-diagnosis to advanced dementia stages. I worked with the Alzheimer's society and became an approved instructor across the UK for dementia awareness training. Adept Care Homes allows me to help our team support our wonderful residents, who are living with dementia, at any stage of their diagnosis.

I am here to support our resident's, their families and friends and our team on your journey, at every step of the way, just ask to speak with me today."



"Since my mother moved to Chetwynd House Care Home, I have nothing but praise to say about the staff, facilities and generally the whole overall experience of being at the place. Any queries, especially during the Covid problems, were dealt with in a most exemplary and efficient manner. I would highly recommend the care home."

Peter D, (Son of Resident)

 [carehome.co.uk](https://carehome.co.uk)





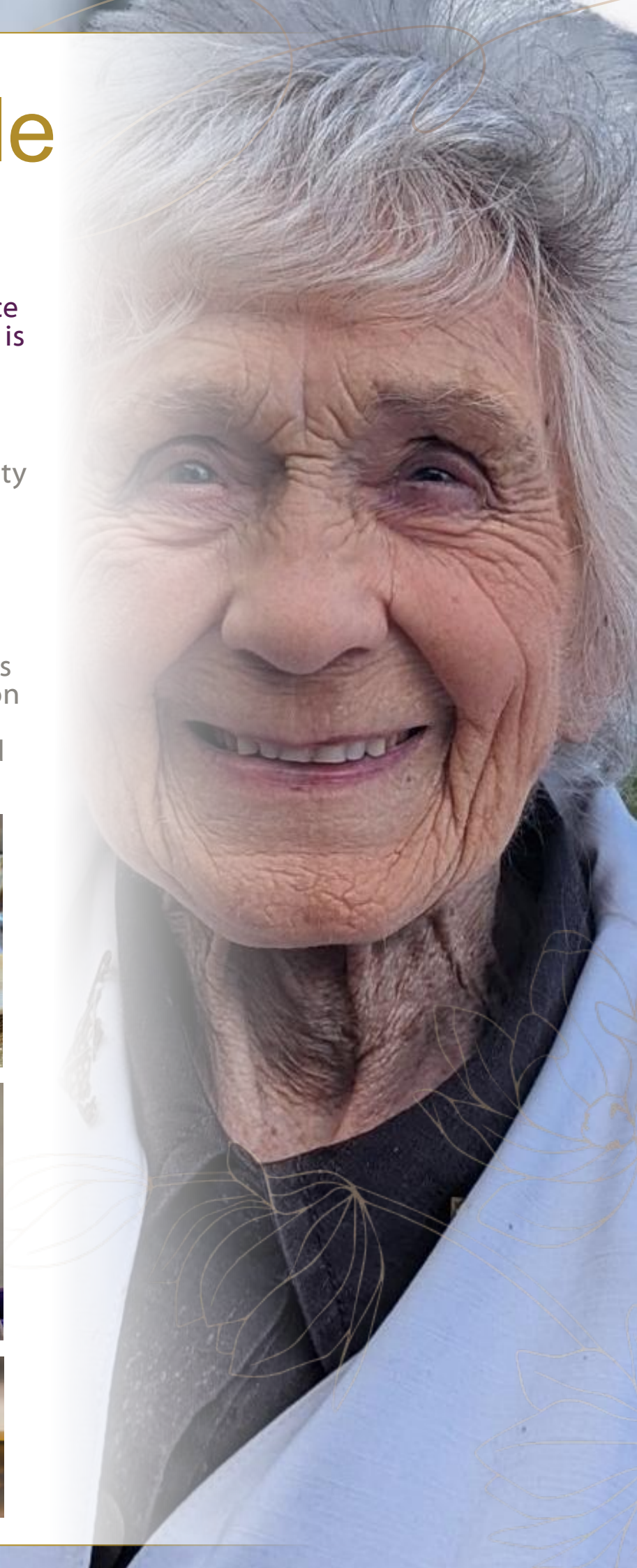
# Our Lifestyle

## Our Dining & Nutrition

Serving our residents with a choice of delicious, home-prepared food is at the heart of our homes.

Dining and Nutrition is about so much more than just nutrition at Adept. Our kitchens create a variety of seasonal menus, in addition to catering to their varied dietary, nutritional and cultural needs.

We believe in empowering our residents to enjoy as much independence as possible and this includes mealtimes too. In addition to our dining times, residents can enjoy a range of lighter meals and snacks through the day.





# Our Activities & Wellbeing

All of our homes offer a varied and engaging program of activities and events, designed to enhance the physical, mental and spiritual wellbeing of all our residents.

From creative activities such as painting, baking and gardening, to regular visits from entertainers such as singers, dancers and musicians, religious services and outings, our activities are intended to inspire and engage our residents as individuals and as a community.







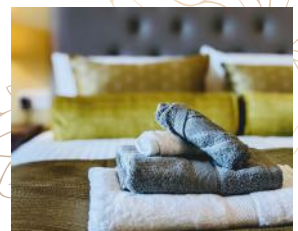
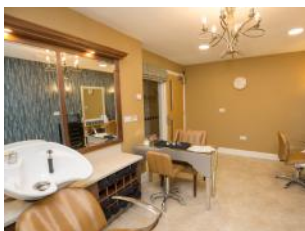
## Our Facilities & Accommodation

Chetwynd House is a purpose-built home to superb standards

We provide a comfortable home where residents feel safe, and can be cared for while retaining their independence, allowing their senses to feel at ease and refreshed.

All our rooms are furnished and decorated to a extremely high standard, with several of our rooms having safe and direct access to outdoor spaces including private and personal gardens, whilst ensuring each resident has a comfortable, spacious environment with those familiar and homely creature comforts.

We have a great choice of lifestyle facilities within the home, including a spa bathroom, a hair salon and nail bar, The King's Head Pub, complete with Beer Garden and the Flicks Cinema where our residents regularly get together to watch their choice of film.







SCAN ME WITH  
YOUR PHONE  
& TAKE A 360  
TOUR

# Come and See For Yourself



There is an open invite for you to come and visit us at anytime that is convenient for you. We would love to welcome you to Chetwynd House and meet our team. We are here to help you choose the right home for you and we can answer any questions you may have.



For more information or to make an appointment, contact us on:

**Tel. 0115 697 9767**

**Email:**

[chetwynd@adeptcarehomes.co.uk](mailto:chetwynd@adeptcarehomes.co.uk)



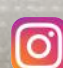
## Where Can You Find Us?

Chetwynd House is easy to get to and is conveniently located with public transport just a few footsteps away.

**Chetwynd House Care Home**  
Slade Road,  
Chillwell,  
Nottinghamshire  
NG9 4GS

See what life is really like at  
Chetwynd House Care Home by  
following our social media

 [@ChetwyndHouseCareHome](https://www.facebook.com/ChetwyndHouseCareHome)

 [@chetwyndhouse](https://www.instagram.com/chetwyndhouse)



'a superb place to live or work'



## Adept Homes Support Centre

1 Lutterworth Road, Burbage, Leicestershire, LE10 2DJ

[info@adeptcarehomes.co.uk](mailto:info@adeptcarehomes.co.uk)

**01455 274 273**

