

It's good to *be home*



*Your home
your life*

We're Bluebird Care



We're here so your loved one can stay home, where they want to be. Where things are familiar. Where they feel at ease. Where they have the best chance to live a full and meaningful life.

And we're here for you too. Because right now is no doubt a challenging time in your life as well. And you could probably use some support.

Whether you're looking for everyday companionship or more complex care, our highly-trained Care Experts will help your loved one live the life they want, where they want.

Because as everyone knows,
it's good to *be home*.



Choosing the right *care* for your loved one

We get it. If someone special in your life needs extra support to go about their life, it's a big decision. You need to weigh up lots of different things and, most importantly, make sure that your loved one will be happy.

We can help. We'll listen to your needs and, together with you, create a care plan that's tailored to you and your loved one. And if anything changes, we can simply change your care plan so that you get the best possible service.



Eight reasons to choose Bluebird Care

01

1-to-1 care
and support

02

Expert Carers
and equally good
companions

03

Your loved one can remain
independent in the home
they know and love

04

Flexible services that
evolve with your loved
one's needs

05

Enables your loved
one to stay healthier
for longer

06

Local support from
our team of experts

07

Help with cooking,
bathing and
household chores

08

Gives you a
much-needed break
from your care
responsibilities



It's good to have a *helping* *hand*

Live-in Care lets people stay in the place they love best: their home. So if your dad's not able to move around the house the way he once did, or your aunt's recovering from a big surgery, or someone you love needs support to go about their day, we can help.

That way your loved one can live the independent life they want. Simply by having one of our Live-in Care Experts by their side.

Whatever your
family needs,
we're here to *help*.



*Find
out more*



Live-in *Care*

What is Live-in Care? At its heart, Live-in Care is about home. It's about ensuring that loved ones can stay in the place that makes them happiest. Where every room is filled with cherished memories, and every nook and cranny brings its own kind of joy.

No one should have to leave behind what's familiar, just because their personal care needs have changed. And with Live-in Care, your loved ones won't have to.

That's because our highly-trained Care Experts will live in your loved one's home with them, giving them the everyday care and support they need. While giving you a much-needed break from looking after your loved one.

This could be, say, for 12 hours a day, including a 2-hour

personal break for our Care Expert. Or it could be for 24 hours a day, which would be covered by two different Care Experts.

Ultimately, the amount of time we spend with your loved one is entirely up to you. Because the care we provide is completely built around your loved one's needs.

One thing that never changes though? Helping them to live a safe and satisfying life at home.



“Bluebird’s Live-in Care *for mum* is simply outstanding. We feel so lucky to have them *caring* for her”

Lynne



It's good to feel at ease

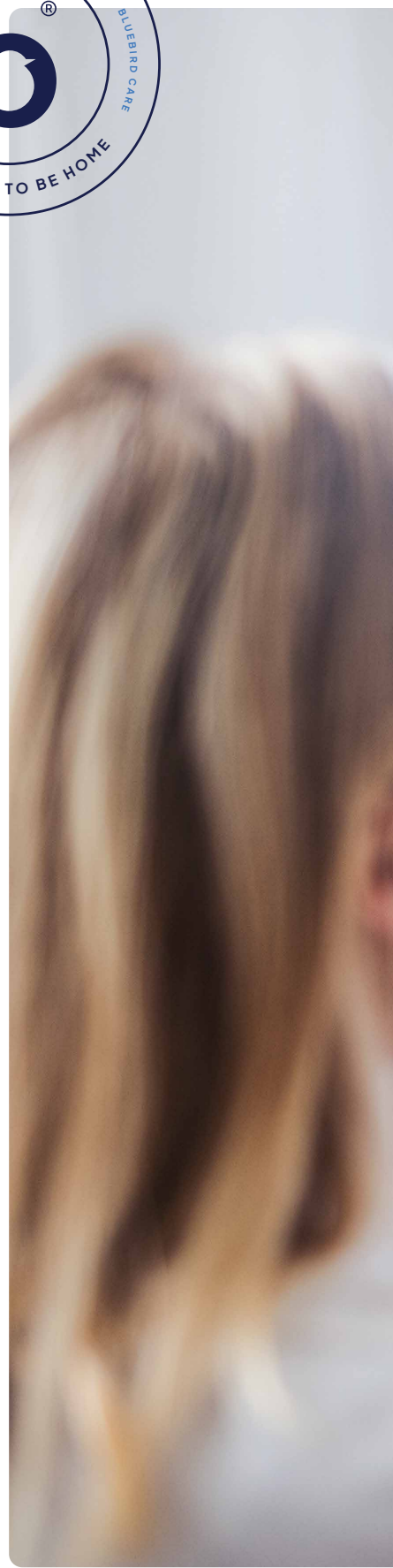


Here are just some of the reasons people choose Live-in Care with Bluebird Care:

- > Because your loved one will receive personalised, 1-to-1 support in their own home
- > Because the service is completely tailored to your loved one's needs and can be adapted at any time
- > Because your loved ones can enjoy all the same hobbies as usual, from gardening to card games with friends
- > Because it lessens the likelihood of falls and slows the development of age-related illnesses
- > Because you can make the most of the time you spend with your family, rather than looking after them all the time
- > Because our Care Experts really care, and form a bond with your loved one

*Find
out more*

For more on the benefits of Live-in Care, visit:
[bluebirdcare
.co.uk/live-in-care](https://bluebirdcare.co.uk/live-in-care)





*“Live-in Care means I don’t
have to sell my home of 50 years,
where I hold so many memories
with my late husband”*

★★★★★

Joyce

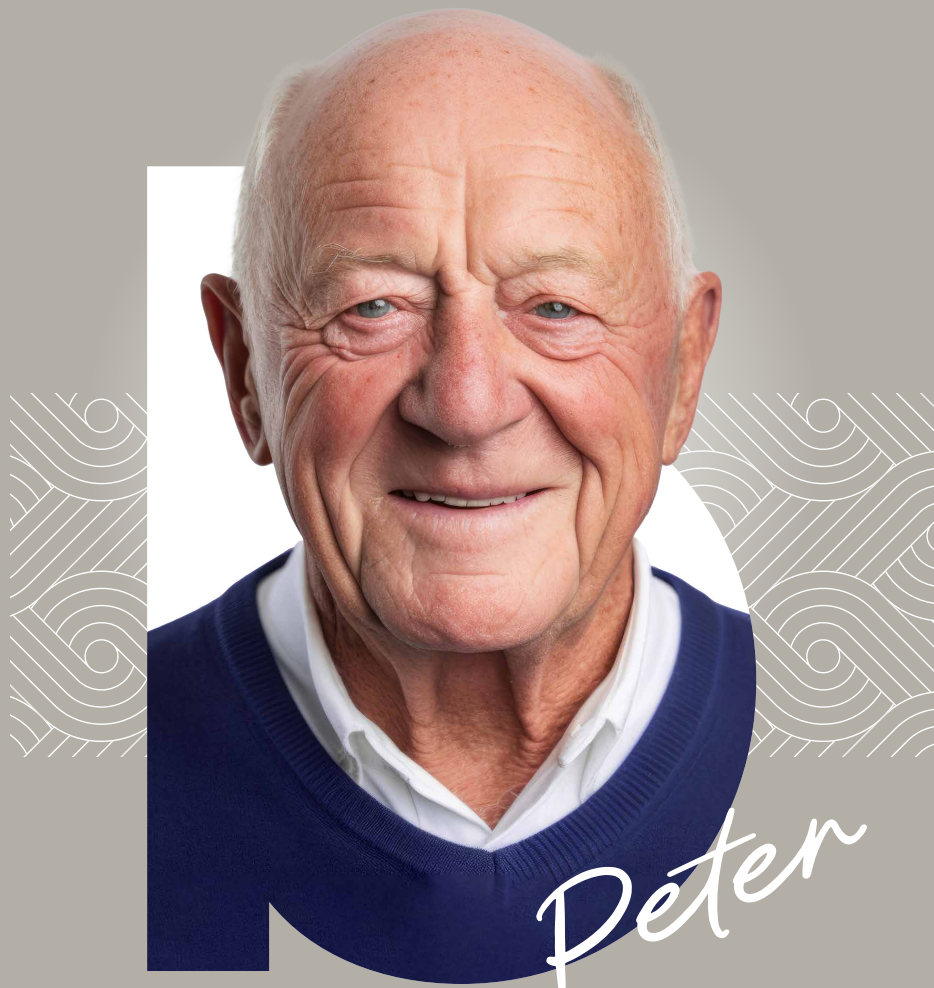
Home Care vs a Residential Care Home

Everyone's different. Everyone has different likes and dislikes. But here are some of the most common reasons why the people we look after choose Home Care over a care home.

- > Your loved one can live independently in their own home rather than with other people
- > Your loved one can live with their pets and the things they love, rather than leave them behind
- > Your loved one doesn't have to share communal areas
- > Your loved one doesn't need to worry about infections that spread quickly
- > Your loved one can enjoy 1-to-1 care and support
- > Your loved one is free to follow their own routines rather than someone else's
- > Your loved one doesn't need to compete for the attention of care staff

*Find
out more*





“They’re *so* knowledgeable
about staying well,
I feel *safe* in their hands”

Customer
6+ years

Our Care Experts

All of our Care Experts are highly professional. And with big hearts too. On one hand compassionate and on the other reliable, they'll enable your loved one to live life on their own terms, with dignity, comfort and peace of mind.



Along with respecting your loved one's privacy, they'll always give them the time and attention they need. Which isn't always the case in busy care home environments.


They're also fully employed by us, which is important for a couple reasons. For starters, it means we know they have all the training they need because we trained them ourselves. And it also means they're available whenever you need them, as they only work for us rather than for multiple care providers.

How else can we *help*?

They're like *our* other *family!*

Vivian

Care comes in all shapes and sizes, and what one person needs is often very different from what another person needs. Live-in Care might be perfect for some, while others might prefer weekly visits for much-needed companionship or our Health & Wellbeing checks so that any early signs of decline are spotted right away. Whatever your situation, we're here to help.



Live-in Care provides: Companionship - Outings - Overnight care
Holiday care - Personal care - Meal times - Household chores
Shopping - Medication - Health & Wellbeing checks

Our promise to you

You can trust us to keep your loved one safe. We'll look after them with all the care and attention you would, but also with the expertise and know-how that comes with extensive training and experience.

You can trust us to always put you and your loved one first. Listening to your needs, respecting your wishes, treating you with dignity and understanding. We'll also create a care package that's tailored to your loved one's needs, and review it regularly to ensure it's working as well as possible.

You can trust us to be there for your loved one, as agreed and on time. To always be professional, but more than that, to do our job with heart. To show up with a smile and make your loved one's day.

You can trust that we'll do everything we can to make working with us as easy as possible,

especially when it comes to technology. That way you can be involved in planning your loved one's care, and always be kept up-to-date to ensure your own peace of mind.

Finally, you can trust we'll go out of our way so that your loved one can lead a happy and fulfilling life. We'll be their friend. We'll share stories together. We'll take them shopping or to their favourite gallery or to see the people who mean the most to them.

In short, we'll help them keep living the life they want.



Your local office



Rushcliffe & Melton

At Bluebird Care Rushcliffe & Melton, we're here to help. Whatever your need, whatever your situation, we're here to listen, chat and recommend the best way forward for you and your family.

I've worked in social care for over 10 years and, all too often, I've seen a one-size fits all approach. But no two people are the same. So no two packages of care should be the exact same either.

Bluebird Care gave me the opportunity to really make a difference in people's lives. That's why I joined this wonderful family and set-up Bluebird Care Rushcliffe & Melton. We've been honoured to receive multiple awards for the premium quality of our care and support, and have always upheld "Good" in all areas during our inspections by the CQC (Care Quality Commission) and

"Outstanding" in being 'well-led'.

We pride ourselves on having a kind and supportive culture, and we only employ genuinely empathetic Care Experts. We also know we're only able to provide the premium quality service you expect because of the hard work and dedication of our entire team. So it's no surprise that we value each and every one of them.

If you think someone in your life could benefit from Care at Home, please don't hesitate to get in touch. We'd love to share how we can help.

Scan me to check if your loved one's home is in the areas we can visit them in.



Andrew

Andrew Bryan
Director

bluebird
care[®]

If you have
any questions
please call us on

0115 9333 114

Or email us at

rushcliffeandmelton@
bluebirdcare
.co.uk

bluebirdcare
.co.uk
/rushcliffe-melton

