

“It’s absolutely lovely here. Everyone’s so kind and helpful and there’s a nice atmosphere. They do all they can to keep people happy, it couldn’t be any better.”

Barbara.



Clarence Park, Weston-super-Mare

Type of care:

Registered nursing home providing short and long term care.

Our spacious, bay-windowed town house is just minutes from Weston-super-Mare’s famous seafront. Inside you’ll be greeted by lots of smiles, a real family atmosphere and simply beautiful interiors.

You’ll find our home just opposite the much-loved Clarence Park, overlooking its striking lawns and mature flowerbeds. This large Victorian townhouse combines both modern and traditional interiors with an emphasis on stylish design in warm, welcoming rooms.

The large bay windows allow light to pour into our elegant sitting rooms.

Many of our bedrooms open out onto a courtyard garden set around a Mediterranean-style patio.

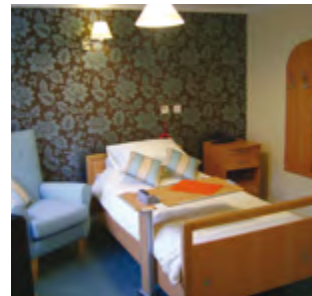
Our garden features ramps and wide block paved areas for easy access, colorful flower beds and a gently flowing fountain. An arbour with climbing clematis provides shade on sunny days and raised planters make gardening a continuing pleasure for many of our residents.

notaro
CARE HOMES



“Our residents are very involved in running our home, we want them to feel it’s their home and we’re here to assist them. Guests always remark on the friendly, family atmosphere. We have a lot of fun, we’re a happy home.”

Clarence Park Manager.



Our homes may well be care homes, but first and foremost they are our residents’ homes.

Each room has been created to be a comfortable place to relax in and enjoy. We also encourage you to bring the little things that make your new surroundings feel like home.

Our home features:

- 37 single rooms and 3 double rooms
- 3 spacious lounge areas
- 2 elegant dining rooms
- Quiet reading area
- Landscaped gardens
- Beautiful courtyard with a fountain
- Hairdressing salon
- 2 Hydrotherapy bathrooms
- Weekly visits from the GP and Physiotherapist
- Minibus

Bedroom facilities:

- Room sizes and styles vary and facilities can depend on room chosen
- En-suite and walk-in shower
- Flat screen TV with Freeview and radio
- Broadband internet access
- Nurse call system
- Adjustable electric beds

Local amenities:

- Clarence Park opposite
- A few minutes walk from the beach
- Local shops nearby

Activities

At Notaro Homes we understand the importance of meaningful activities. They play a vital role in helping our residents live life to the full, regardless of their physical ability. Our activities are not only designed to engage mind, body and spirit but to respect and honour our resident’s individuality. Each of our homes have their very own Activities Coordinator who is responsible for organising and delivering a fun packed, varied programme which often includes trips out and about to visits from animal sanctuaries, community groups and theatrical companies.

Registered nurses available day and night

At Clarence Park, as in all of our nursing homes, we have Registered Nurses in constant attendance, day and night. Of course, nursing isn’t just about clinical and medical care. Our nurses are good communicators and listeners too, working well as part of a team alongside residents, families, friends and other specialists.

Visitors are always welcome, call in at your convenience to see for yourself how we care, when it matters most.

Clarence Park Care Home, 7-9 Clarence Road North, Weston-super-Mare BS23 4AT
T 01934 629374 E enquiry@notarohomes.co.uk F 01934 626207

You’ll find more information about this home and our company at www.notarohomes.co.uk

Registered Office, N Notaro Homes Ltd, Queensmead Court, Bristol Road, Winscombe, North Somerset BS25 1PR Tel: 01934 422822 Fax: 01934 422824

notaro
CARE HOMES