



Broomy Hill

NURSING HOME









A warm welcome

Broomy Hill Nursing Home is a specialist dementia and nursing care home for a small community of 40 residents.

Set over two floors, our home is designed around a central courtyard with a well-maintained garden that surrounds virtually all sides of the building, ensuring plenty of natural light floods the home to provide your loved one with a comfortable, supportive, and accessible home.

The home was first built as a Victorian-era school academy in the 1900s, yet we've updated every part of the building, making it your loved one's perfect home-from-home.

Facilities

-  Dementia care
-  Nursing care
-  Palliative/End-of-life care
-  Respite care
-  Day care
-  40 bedrooms with 24-hour call button
-  Two floors with lifts
-  Freshly prepared home-cooked meals
-  Dining room
-  Three resident lounges
-  Activities room
-  Private visitors room
-  Hair salon
-  Well-maintained accessible gardens and central courtyard
-  Range of daily activities
-  Wi-Fi throughout the home



Safe and supportive care

From our qualified nurses and carers to our maintenance and dining team, wellbeing coordinators and housekeeping team, at Broomy Hill Nursing Home our close-knit team has the skills and expertise to provide your loved one with exceptional care that feels familiar, calming and comforting.



We're proud of our home's family spirit and from the very beginning our person-centred approach means that we take time to get to know your loved one, understanding their care needs, interests and preferences, and what makes them unique. This forms their care plan which is captured and recorded on our electronic care system 24/7 for your complete peace of mind.



You can contact our team whenever you need to, and they'll always discuss your loved one's needs with compassion and empathy.



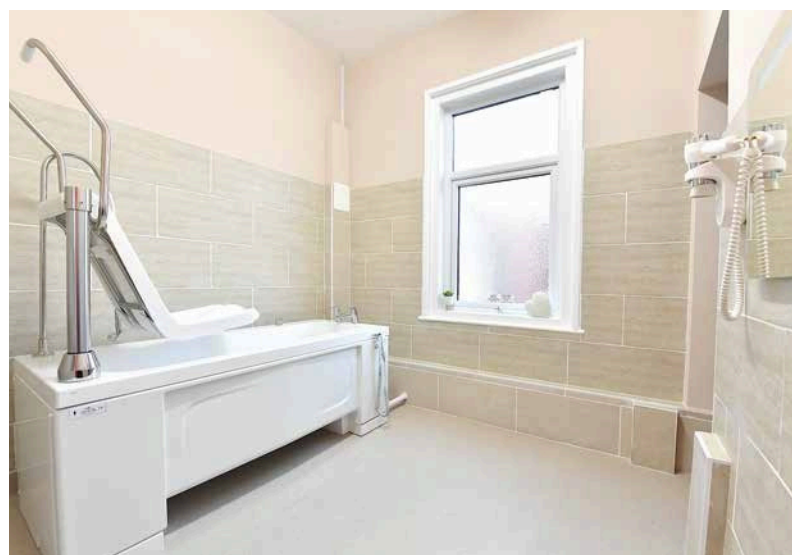
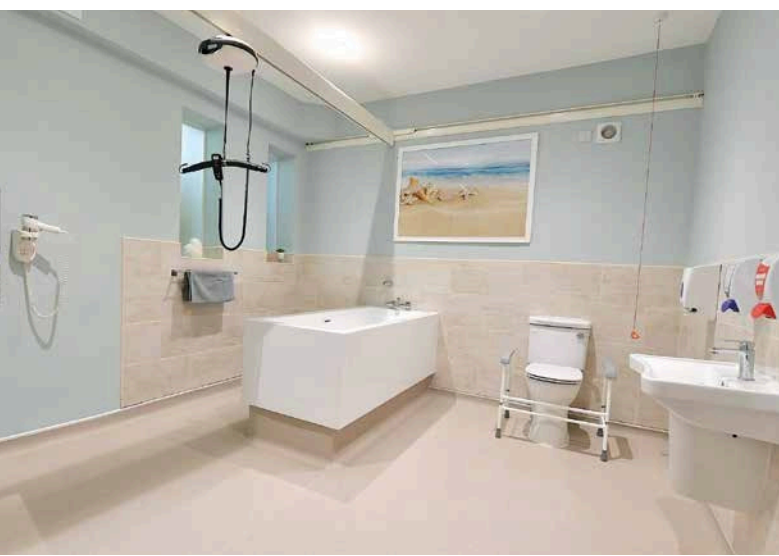


Restful bedrooms

Safety and comfort are paramount at our specialist dementia and nursing care home. To support this, your loved one's room has its own 24-hour call button and floor sensor mat, making sure we can assist them any time of the day or night.

We offer a range of bedrooms to suit residents needs, with every room having a home-from-home feel. Our bedrooms have soft furnishings and a colour scheme that promotes a peaceful and calming environment, and all include a vanity unit. We encourage your loved one to bring their own personal furnishings to make it truly feel like home.

...and modern bathrooms





Wholesome dining

Our residents at Broomy Hill Nursing Home enjoy three home-cooked main meals daily, prepared on-site by our dining team using fresh ingredients and, where possible, local produce. They focus on nutritionally-balanced, classic and comforting meals, with a varied menu to suit tastes and preferences. Hot and cold drinks are available 24/7, and we provide homemade biscuits and cakes for your loved one to take with morning and afternoon tea.

Many of our residents at Broomy Hill Nursing Home are living with dysphagia. They enjoy the same freshly-prepared and well-balanced meals, yet are pureed for their comfort and ease - never compromising on nutrition and presentation.



Tailor-made activities

Physical and mental activities are important for cognitive health, and we encourage residents to get involved in our daily activities. Based on personal care plans, meaningful activities such as games, exercises, music and art are organised by our dedicated wellbeing coordinators. If your loved one enjoys gardening, they can spend time planting in our raised bedded areas.

The sense of community and togetherness is so important to our residents, which is why Broomy Hill Nursing Home has been designed with connection in mind. That extends to your visit too, where you and your loved one can spend valued time together in our new visitors room. The room can also be privately booked for larger gatherings.



Contact us

Broomy Hill Nursing Home
43 Breinton Road
Hereford
HR4 0JY



Enquiries@ashberry.net



www.ashberry-care-homes.co.uk



01432 274474