



Brunswick Court Care Home

Watford



Brunswick Court Care Home

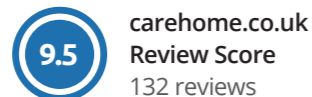
Here at our purpose-built home, we warmly welcome those with a range of residential, nursing and dementia care needs. That could be for a few weeks of respite, or a more long-term stay. We're just half a mile from Watford Junction train station, and there's plenty of on-site parking.

We'd love to meet you and show you around our home.

We're here to help
01923 889 172

bupa.co.uk/brunswick-court

Lines are open 8am to 6.30pm Monday to Friday, 9am to 12.30pm Saturday. We may record or monitor our calls.



Scored out of 10 from independent reviews left by relatives, friends and residents on carehome.co.uk over the past two years (correct at the time of going to print).

Bupa is a multi award-winning care home provider:

UK Employee Experience Awards 2023 – Best Employee Engagement
UK Employee Experience Awards 2023 – Best Engagement Team
carehome.co.uk Care Home Group Awards – Top 20 Care Home Group 2025



At a glance

What type of care do we offer?

- Nursing
- Residential
- Dementia
- Short stay
- Convalescence
- Palliative
- Huntington's
- Parkinson's
- Day care

How might your care be funded?

- You could pay for your own care
- Your local authority might pay
- You could top up any payments made by your local authority
- Your family or friends might pay for your care

What might it cost?

The amount you pay will depend on the room you choose, how much care you need, and how specialised it needs to be. Our prices are competitive with local care homes.

We can help you work out what funding could be available.

Let's have a look around

Our modern home provides the perfect setting for relaxing or recovering while receiving quality care. And if ever they need anything, there's always a member of our friendly team on hand to help.



Enjoy the outdoors

Outside, residents can connect with nature by tending to the flowers in the garden, or taking a gentle stroll.

Love the indoors

There are plenty of areas to relax or spend time with visiting family. They can get their hair or nails done in our salon, settle down with a book in our quiet lounge, or join in with an activity.

Find time for yourself

How you spend your time is up to you. Whenever you want some quiet time, you can relax in your room or enjoy the many peaceful spaces around our home.

Bring your personal items

We know how important your treasured keepsakes are, so you're welcome to bring things from home that make you smile.

Make it your own



Room plan

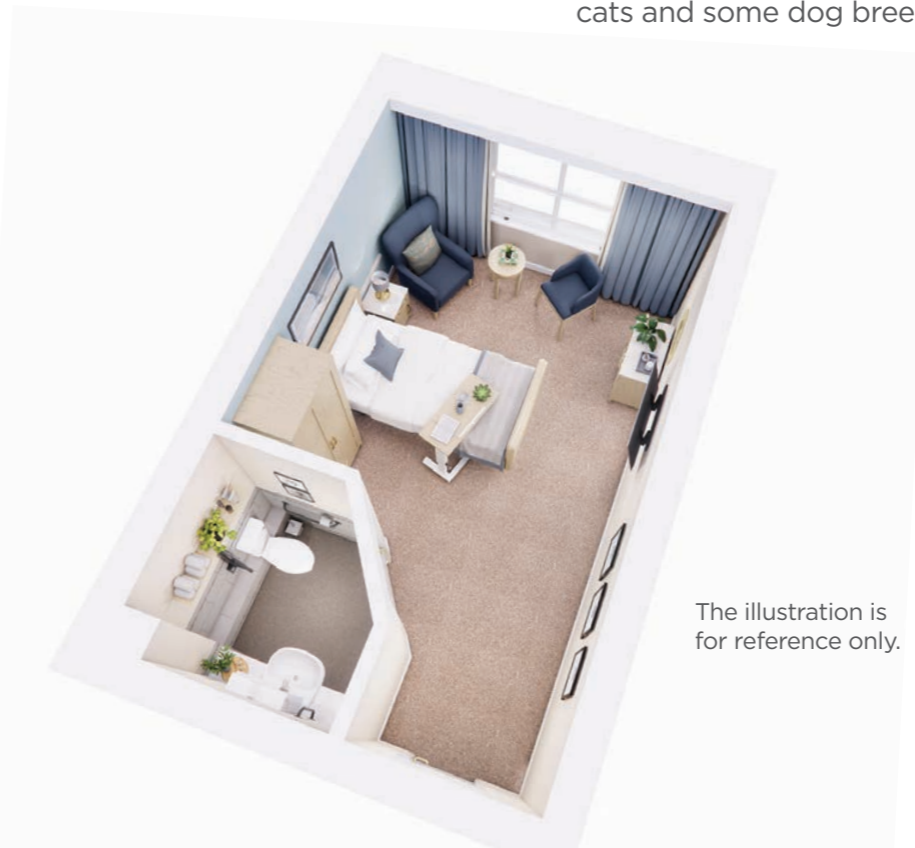
There are 88 bedrooms at Brunswick Court. We offer deluxe or superior rooms, subject to availability. There are a range of en suite options and we'll do our best to accommodate for couples. All rooms include a flat-screen TV.

Deluxe room

You can expect an en suite WC from a typical room.

Pet friendly

We do allow pets in our home, these include cats and some dog breeds.



The illustration is for reference only.

What's included?

-  **24/7 residential, nursing, dementia and short stay care**
-  Personal and medical care
-  A variety of daily activities
-  Freshly prepared homemade meals
-  A choice of comfy bedrooms
-  Beautifully kept home and gardens
-  Daily housekeeping and laundry
-  Dedicated to a sustainable future

Your care

We're here to help with your care needs and we'll develop your care plan together. We understand how important it is for your family to keep up to date with your care, especially when they can't always visit in person. Blua Family is our online portal designed to give families secure, timely access to updates about your care including meals, daily routine and wellbeing activities.

The care types we offer are:

Residential

If you're looking for support with day-to-day life, our residential care services offer peace of mind. Trained staff will prepare delicious meals for you, do the cleaning, and even help you with personal care.

Nursing care

Our trained nurses are available for you around-the-clock. This is particularly helpful and reassuring if you have a condition that requires regular medical attention.

Dementia care

If you're living with dementia, our specialists can help you lead a better quality of life. With the help of your family, we'll build a picture of your life story and preferences. This means you'll receive more personalised care to help you feel comfortable and secure every day.

Respite and short stay

Anyone can come for a short stay. It could be to provide respite for you and your carer, or to help you try out what it's like to live here before moving in long-term.

Palliative care



We offer dedicated support and care to help make the end of life as comfortable as possible. This includes around-the-clock care in a calming environment.



Services include:

-  visits from a GP
-  support with external health related appointments*
-  specialist nurses and therapists where needed.

Plus, for an additional cost:

-  hairdressing
-  chiropody

You won't need to keep any cash with you. We'll set up a personal account and you can top it up when needed.

*We can arrange this for you. You'll just need to pay for your transport.

Good food is important to all of us

A great food and dining experience can be the highlight of everyone's day. Mealtimes are a chance for our residents to get together and chat over varied and tasty dishes, freshly cooked by our in-home chefs.



Meal times

In our home, meal times are very social. Family and friends are welcome to enjoy a meal with you, or if you prefer to eat some meals in your own room, we'll happily serve the food to you there.

As well as a selection of dishes for breakfast, lunch and dinner, we prepare fresh bakes every day to enjoy with your morning coffee and afternoon tea.

For the days when you fancy something light, our Something Simple menu is ideal. And if you get peckish later on, you can take your pick from the Night Bite menu.



Food to look forward to

Our Menu Collection means you can choose from a range of tasty dishes, freshly prepared and tailored to your own preferences.

When you move in, the chef will talk to you about your likes and dislikes, and you can relax knowing any dietary needs will be catered for.



Issued January 2025



Celebrations and events

Food is an important part of any celebration, and it's no different in our home. For our parties and events, the chefs create wonderful celebration buffets and sweet treats to enjoy alongside music and entertainers.

We have dining and communal areas where families can host private events such as birthday parties. We'll just need to know in advance. Plus, we can arrange catering for an additional fee.



Do the things you love

Meals aren't the only social occasions in our homes. Activities are at the heart of life here, and we encourage all kinds of indoor and outdoor interests.

All kinds of activities

Our activity co-ordinators organise fun things to do such as:

- arts and crafts
- visiting entertainers
- bingo and quizzes
- animal visits
- flower arranging
- gentle exercise classes.

If you prefer, we can also bring activities to your bedside.

Our community

We have great links with our local community. We'll help you to stay in touch with your own circles of friends and interests, and you'll be able to join in with what's going on locally.

Part of local life

Our care home is very much part of the community. We get together whenever we can - for things like summer and Christmas fairs, garden parties and charity events.

Community events and celebrations

Whether it's the cup final, Strictly or a royal occasion, we'll organise a get-together so you can join in and be part of it all.

Multifaith support

If faith is important to you, it's important to us. We can help you to attend your local worship centre.



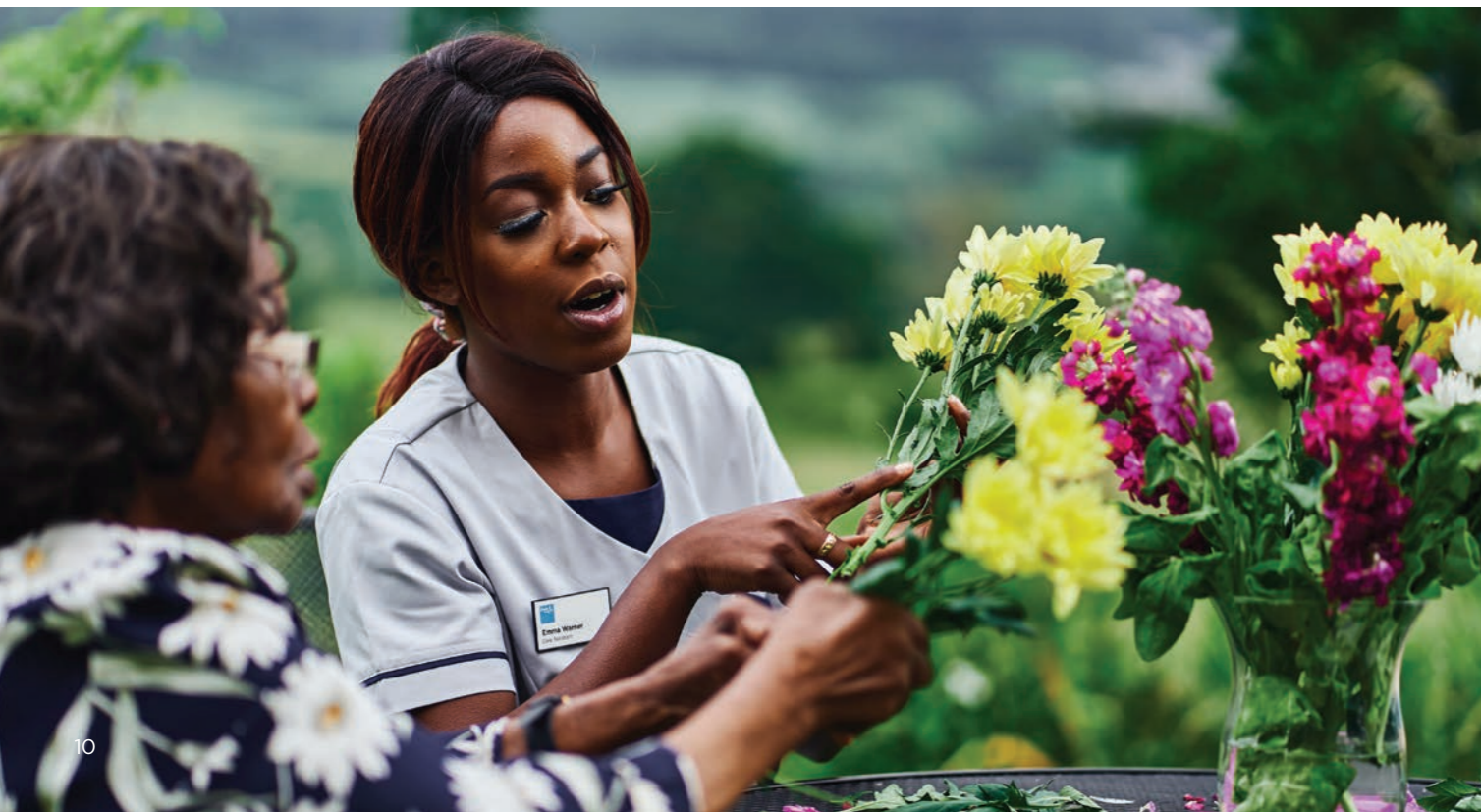
Follow us on Facebook and get a sense of who we are and what life is like here.



BupaCareHomeBrunswickCourt



Use your phone's camera to scan the QR code and visit our Facebook page.



What people say about our care homes

We listen carefully to all the feedback we get from our residents and their families. This helps to ensure we're providing the care, support and services you need for a happy and comfortable stay with us.



99%
of residents
feel safe
and secure*

99%
of residents say
they are treated
with dignity
and respect*

99%
of residents
say 'I am well
cared for'



“ My mother came to the home after a stay in hospital and was very weak. The improvement in her condition over a five-week period was impressive due to the care, kindness and good food provided. My mum felt the treatment was like being in five-star hotel.”

Daughter of resident, May 2025
Source: carehome.co.uk

“ I am so pleased that we chose Brunswick Court as the care home for my wife. She felt at home immediately and has continued to be happy here. Everything is excellent.”

Husband of resident, July 2025
Source: carehome.co.uk

“ This home provides a good choice of nourishing, well prepared food. There is a choice of activities to attend, including weekends. I have a comfortable en-suite room where I can remain or leave for activities or mealtimes according to my feelings or preferences on the day.”

Resident, November 2025
Source: carehome.co.uk

*2025 Net Promoter Score (NPS) from 9,022 Bupa resident and relative responses across all care homes.

Your next steps

Considering care options and choosing a care home can seem quite daunting, and it can be hard to know what the next step is.

Our friendly customer care team advisers can help take you through the process of finding the right care and home. They offer help and advice, and you'll have your own named adviser you can come back to at any stage. It's free advice and we're available six days a week.

We also have trusted advice guides available. If you'd like more information, please visit bupa.co.uk/care-services/care-home-advice to download a guide.



“ The customer service adviser was extremely helpful. She gave me a great deal of information and allowed me as much time as I needed to ensure I had the fullest possible picture of the care home.”

**Wife of resident,
November 2025**
Source: NPS enquiry feedback

“ The adviser took a real interest in my mother-in-law and her needs as an individual. She was able to answer all my questions and provide assurances.”

**Daughter-in-law of resident,
November 2025**
Source: NPS enquiry feedback

We're here to help. Call us on
01923 889 172

bupa.co.uk/brunswick-court

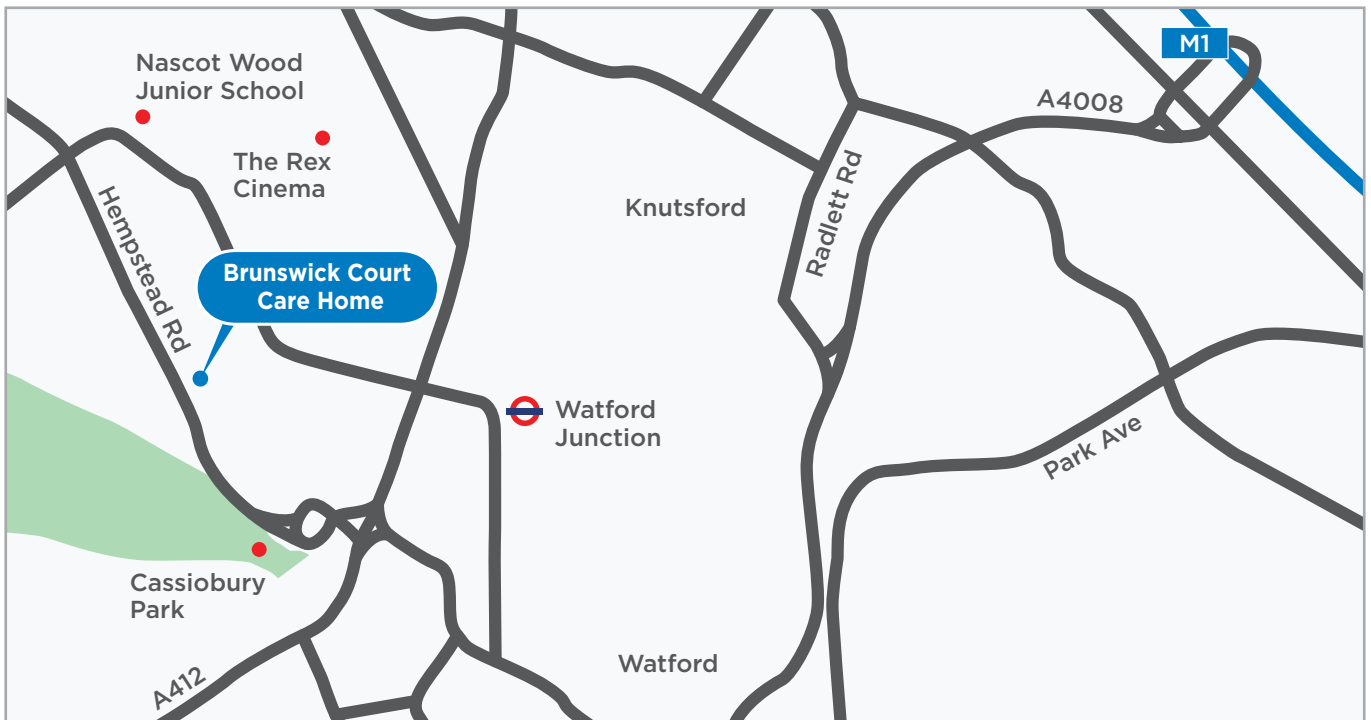
Lines are open 8am to 6.30pm Monday to Friday,
9am to 12.30pm Saturday. We may record
or monitor our calls.



**We look forward
to meeting you,
and showing you
how we'll care for
you at our home.**

Visiting us

If you've never been here, why not arrange a visit to come and meet the team and get a feel for the home. We're just half a mile from Watford Junction train station. If you're coming by car, please access Stratford Road from the Langley Road end (the turning from Hampstead Road is pedestrian only).



To arrange a visit or to find out more, call us on

01923 889 172

bupa.co.uk/brunswick-court



BupaCareHomeBrunswickCourt

Lines are open 8am to 6.30pm Monday to Friday, 9am to 12.30pm Saturday. We may record or monitor our calls.

Brunswick Court Care Home

62 Stratford Road, Watford WD17 4JB

Directions

what3words

You can download the free what3words app, which precisely pinpoints any location on Earth. Then just enter these three words to find exactly where we are: **bats.combining.grabs**

We're dedicated to a more sustainable future

With 100% renewable energy, electric kitchens, carbon-cutting technology, and our first net-zero care home. This message is also printed on recyclable paper. Together, we're creating a healthier community.

Bupa Care Homes (ANS) Limited No. 1960990 Bupa Care Homes (AKW) Limited No. 4122364. Bupa Care Homes (Bedfordshire) Limited No. 3333791 Bupa Care Homes (BNH) Limited No. 2079932. Bupa Care Homes (CFC Homes) Limited No. 2006738 Bupa Care Homes (CFH Care) Limited No. 2741070 Bupa Care Homes (GL) Limited No. 1587972 Bupa Care Homes (Partnerships) Limited No. 2216429 Bupa Care Services (Commissioning) Limited No. 3183275. Registered in England and Wales. Registered office: 1 Angel Court, London EC2R 7HJ. VAT Registration No. 239731641.